

UMS (Universal Management Suite)



UMS4

Universal Management Suite

PROFILE

The **Universal Management Suite (UMS)** is an easy-to use yet extremely powerful software that allows you to remotely manage your IGEL thin clients so that support costs are kept to a minimum. It is extremely open and network friendly so that it easily fits into your organization's existing infrastructure.

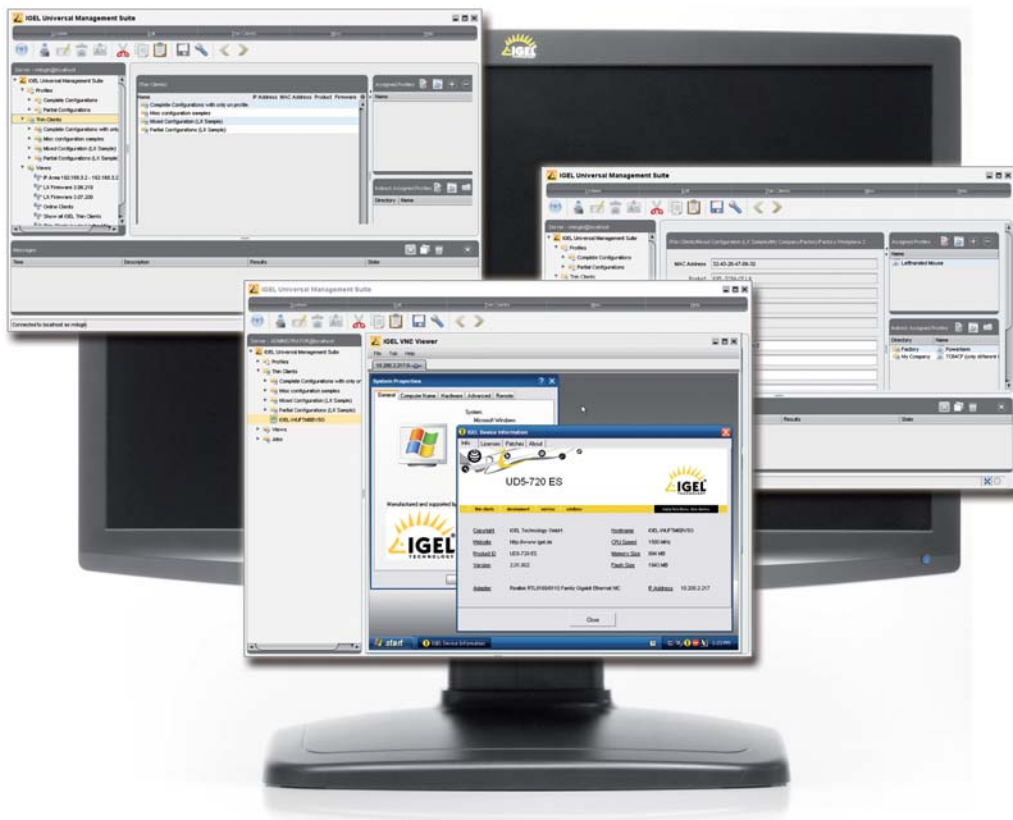
TYPICAL USES

- ▶ Automatically setting up thin clients with the right profile when they first attach to the network
- ▶ Changing the settings of the device or its local protocols and software tools
- ▶ Re-imaging devices mid-life when new firmware becomes available, diagnostics and support

INTRODUCTION

IGEL Universal Management Suite 4 sets the benchmark for the management of modern thin clients. It has a host of features that ensures extremely easy, fast, and secure management of large groups of thin clients with lots of local protocol clients and software tools spread over large WANs. Supporting a variety of operating systems, databases and directory services like Microsoft® Active Directory, the **Universal Management Suite** is easy to integrate into every environment.

A complete and complimentary version of the **IGEL Universal Management Suite** is bundled with every IGEL product. When combined with the outstanding IGEL hardware, you have the most advanced thin client solution on the market today.



The various views offered by the IGEL Universal Management Suite.



IGEL thin clients together with the IGEL Universal Management Suite (UMS) deliver a unique zero client experience. The result is fully automated, rule based deployment combined with advanced policy based configuration management to achieve zero on-going administrative effort. IGEL delivers zero clients without compromise; the flexibility of full native client support for all leading virtualisation technologies, advanced security features and free on-going support and updates. Using the Appliance Mode the clients will fast and directly boot into the VDI sessions like Citrix HDX, VMware View and Microsoft VDI. For you this means zero configuration. A zero client the IGEL way. Try it out yourself right now, it's all free with any IGEL software or hardware based thin client solution.

ECONOMICAL AND USER-FRIENDLY

- ▶ **Fast installation**
This is carried out with the help of an installation wizard and takes just 20 minutes.
- ▶ **Easy to administer**
Most hardware and software settings can be made with just a few clicks of the mouse.
- ▶ **Uniform user interface**
The user interface for UMS is the same as for the local thin client configuration. The additional remote management functions give the administrator complete control in the familiar, proven environment.
- ▶ **No scripting**
Although scripting is supported, you will only need it for controlling the thin client configuration in the most exceptional circumstances.
- ▶ **Asset management**
Automatic capture of all your hardware information, licensed features and installed hotfixes.
- ▶ **Comment fields**
For various information such as location, installation date and inventory number.

OPEN ARCHITECTURE

- ▶ **Support for numerous operating systems**
The UMS can be run on all known versions of Microsoft Windows Server™ and Linux.
- ▶ **Access is independent of the operating system**
The configuration console operates on the basis of Java and enables the system to be administered from any device with the Java Runtime Environment.

SECURE AND ROBUST

- ▶ **Encrypted communication**
Certificate-based SSL-encrypted communication between remote management servers and clients to protect the system against unauthorized reconfiguration of the equipment.
- ▶ **Failsafe upgrade function**
If the thin client machine fails (e.g. power outage or loss of the network connection) while the update is in progress it will still remain useable. The update process will be completed the next time the machine is rebooted.

NETWORK-FRIENDLY

- ▶ **Based on standard communications protocol**
There is no need to reconfigure the routers and firewalls because they use HTTP and FTP.
- ▶ **Buddy update**
IGEL LX thin clients that have already been updated can be used as update servers for other thin clients (e.g., in branch offices).
- ▶ **Partial update**
New updates or applications can be implemented on standard thin clients with Microsoft® Windows® Embedded Standard by means of partial update packages. This means that there is no need to transmit the entire image over the network.

SCALABLE AND EFFICIENT

- ▶ **Support for extensive environments**
The IGEL UMS can be scaled to accommodate several thousand thin clients.
- ▶ **Group and profile-based administration**
The thin clients within a given organizational unit can be administered very easily by means of profiles (e.g., if an employee moves to another department, the administrator can change their settings with a simple drag-and-drop).
- ▶ **Trouble-free rollout**
IGEL thin clients can be automatically assigned to a group on the basis of either the relevant subnet or a list of MAC addresses made available by IGEL.
- ▶ **Comprehensive support for all configurations**
Most IGEL thin client settings, such as device or session configurations, can be processed via the mouse-enabled UMS user interface.
- ▶ **Transfer of administrative rights**
Large organizations can authorize a number of system administrators for different control and authorization areas.
- ▶ **Task planning**
Maintenance tasks can be scheduled at night so that day-to-day operations are not disrupted.
- ▶ **VNC shadowing**
Members of the IT support team have remote access to thin client screens to enable them to rapidly identify problems and demonstrate solutions directly to users.

IGEL UNIVERSAL MANAGEMENT SUITE (UMS) SPECIFICATIONS

SUPPORTED PLATFORMS

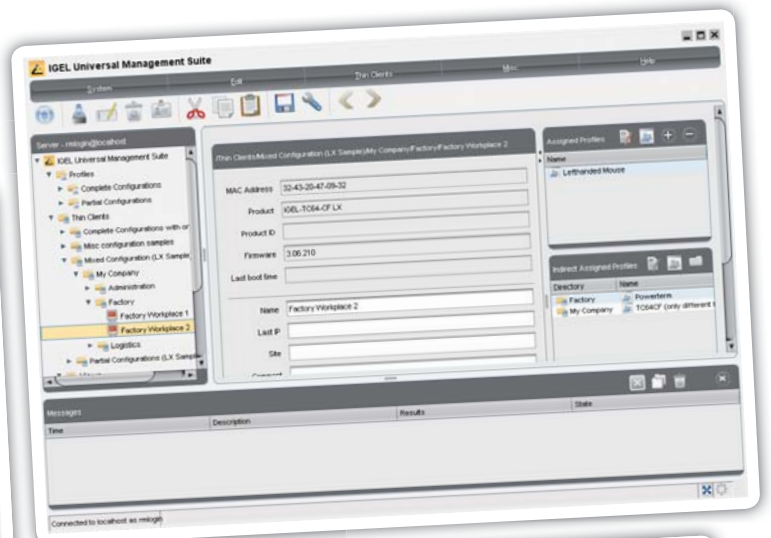
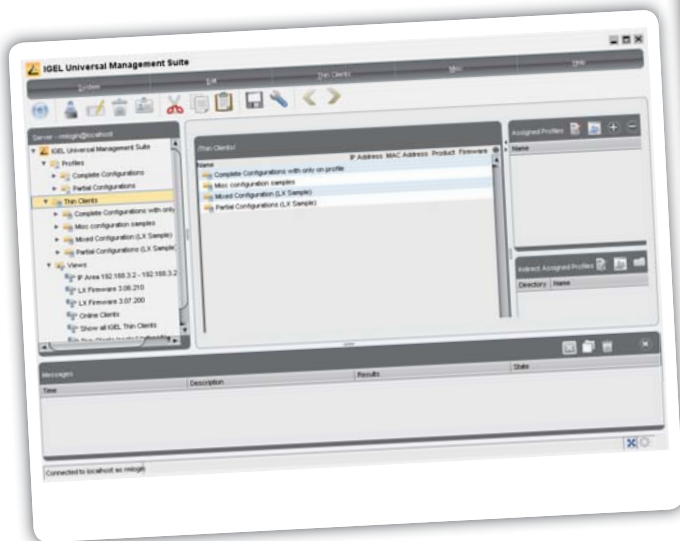
UMS Server	Microsoft Windows Server 2003/2008 R2 Ubuntu 8.04 and 10.04 (32 bit) Redhat 6 (32 bit)
UMS Console	Microsoft Windows XP, Microsoft Windows Vista, Microsoft Windows 7 Ubuntu 8.04 and 10.04 (32 bit) Redhat 6 (32 bit)
Databases	Oracle 10g/11g Microsoft SQL Server 2008, SQL Server 2008 R2 PostgreSQL Version 8.2 and above Apache Derby 10

SECURITY FEATURES

- ▶ SSL communication
- ▶ User / password authentication
- ▶ Active Directory groups can be used for access rights management
- ▶ Local client certificates
- ▶ Full and reliable backup functionality
- ▶ Failover mode

SUPPORTED LANGUAGES

- ▶ English
- ▶ German
- ▶ French
- ▶ Dutch
- ▶ Chinese (Simplified, Traditional)



Top left: Classic view of the IGEL Universal Management Suite

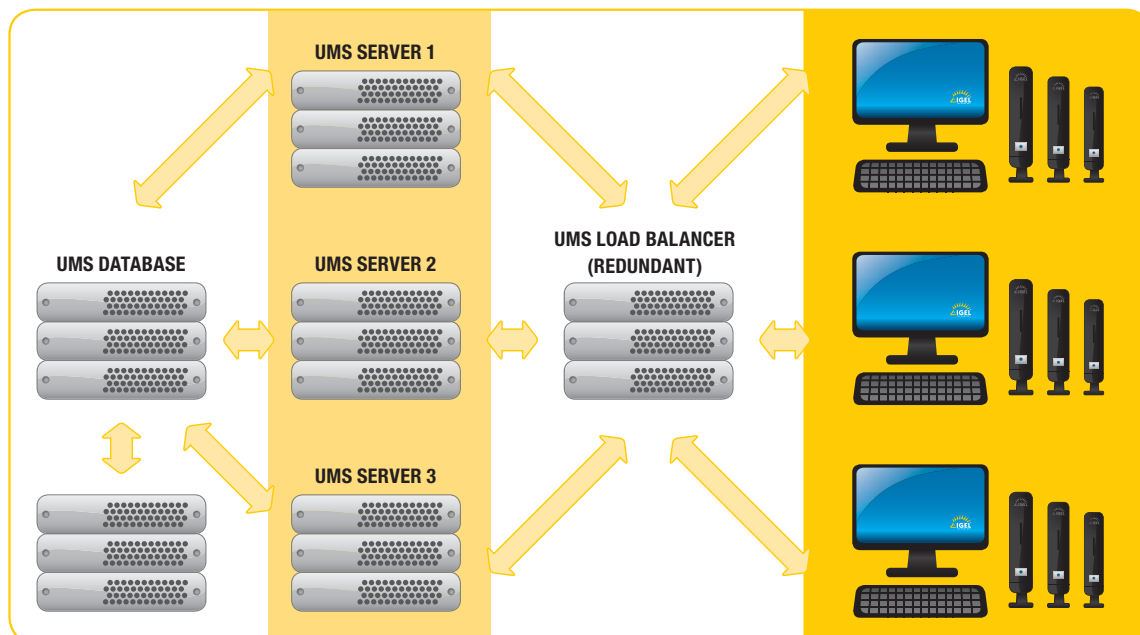
Top right: Here you see the thin clients, each with their settings and assigned profiles

Left: The execution of regular jobs can be suspended on particular days – e.g. public holidays

OPTIONAL EXPANSIONS

1. HIGH AVAILABILITY (HA)

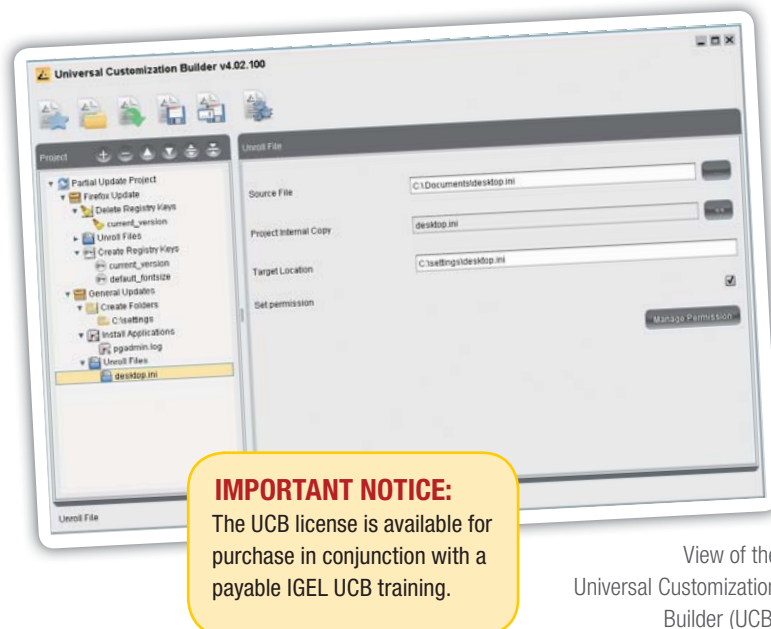
- ▶ High Availability and Load Balancing
- ▶ Failsafe operation of mission-critical business processes and compliance with applicable rules and regulation
- ▶ Failsafe rollouts of new settings to 500 or more devices even while they are booting up essentially simultaneously
- ▶ Licenses are available in packages of 50 managed thin clients
- ▶ The extension is optionally available for the IGEL Universal Management Suite (UMS)



IGEL Universal Management Suite with High Availability Extension

2. UNIVERSAL CUSTOMIZATION BUILDER (UCB)

- ▶ **Simple creation of firmware expansion packages** for IGEL Linux (Custom Partition) and Windows Embedded Standard 2009 or Embedded Standard 7 (Partial Update)
- ▶ **UMS integration:**
 - Familiar look & feel
 - Task-oriented templates (e.g. changing registry keys, installing programs)
 - Automated versioning for each customization project
- ▶ **GUI:** no profound knowledge of Shell or Windows scripting required
- ▶ **Simple debugging:** automated packaging and syntax checks
- ▶ Created packages are supported by IGEL Helpdesk



View of the Universal Customization Builder (UCB)

IGEL is a registered trademark of IGEL Technology GmbH. All hardware and software names are registered trademarks of the respective manufacturers. Errors and omissions excepted. Subject to change without notice.
©01/2013 IGEL Technology | 85-EN-7-6 | WEEE-Reg.-Nr. DE 79295479

IGEL Technology GmbH | info@igel.com | www.igel.com

GERMANY
Augsburg · Bremen
info@igel.de
www.igel.de

UNITED KINGDOM
Reading
info@igel.com
www.igel.co.uk

FRANCE
Paris
france@igel.com
www.igel.fr

THE NETHERLANDS
Utrecht
benelux@igel.com
www.igel.nl

UNITED STATES
Cincinnati
info@igelamerica.com
www.igelamerica.com

CHINA
Hong Kong · Beijing · Shanghai
infochina@igel.com
www.igel.com/cn

SINGAPORE
info@igel.com
www.igel.sg

info@igel.com
www.igel.com



thin clients | development | services | solutions

Many functions. One device.